

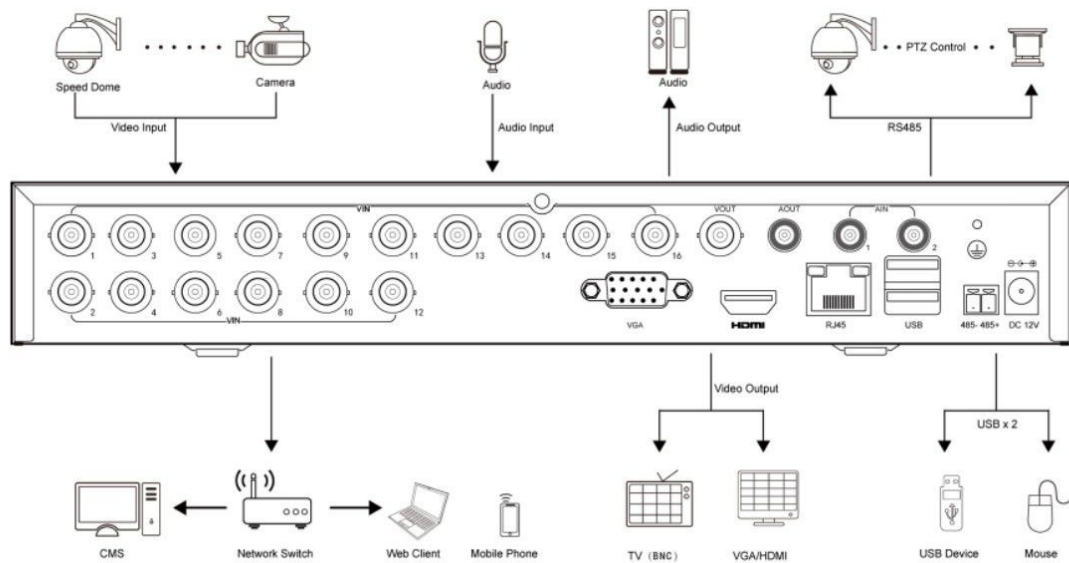
Quick Installation Instructions for DVR

1.HDD Installation

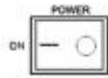
1. Ensure Power supply has been disconnected, open the case cover;
2. Connect HDD data line, power line first , then fix the HDD in the case;
3. Install the cover, connect the power, which with adaptor, press the power switch;
4. Formatting the HDD (Please check details from : System Setup—Peripheral—Storage Device—Formatting);
5. DVR can normally make snapshot and video.

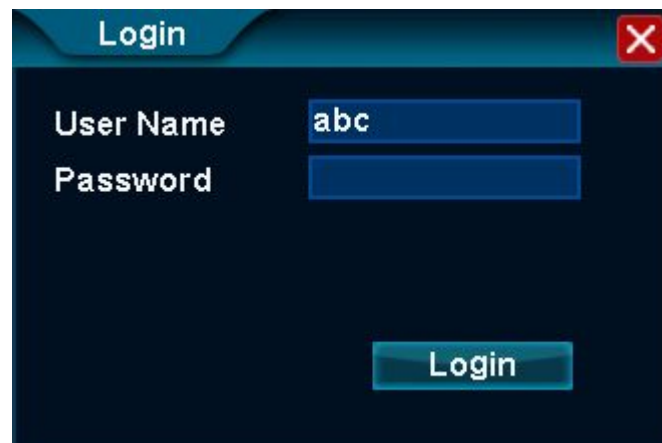
1.Device Connection

After HDD installation,connect the Device as follows:



2. Login

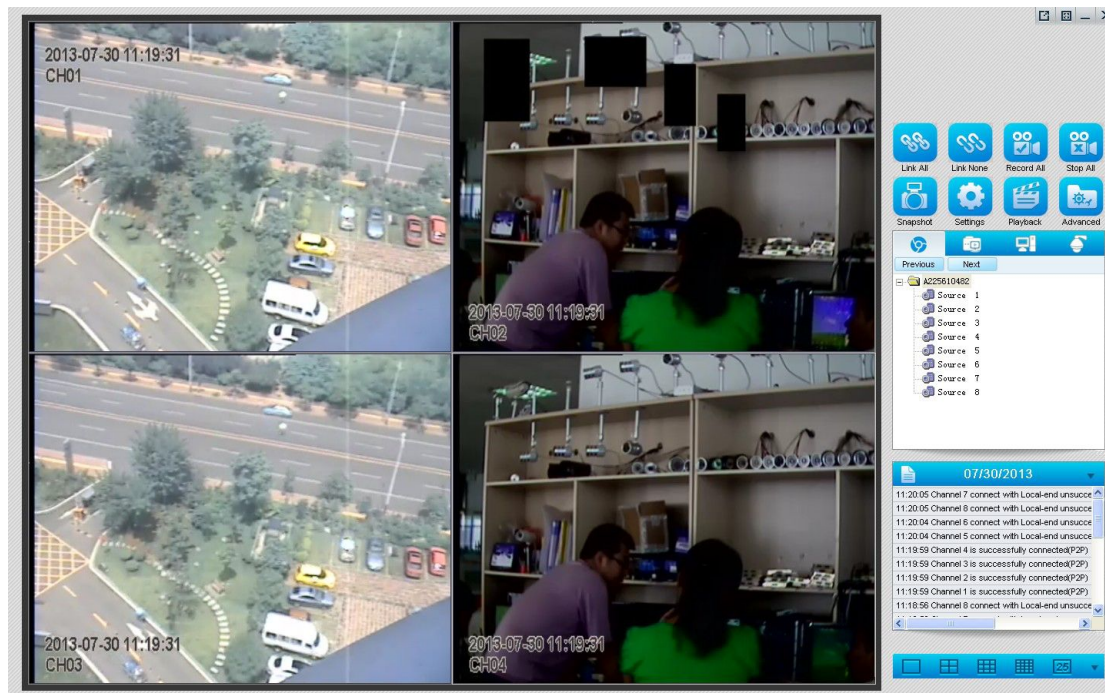
After the Devices connected, Press the power button , then the DVR booting, Enter the username and password login the system. The default username is "admin", password is "" .



3. Remote Connection with CMS

1. Open CMS, in the login interface, select “Device ID Login”, Enter the Device ID, Click Advanced button, Enter the network username and password, Click Login button, then can login successful and connected the DVR Device.

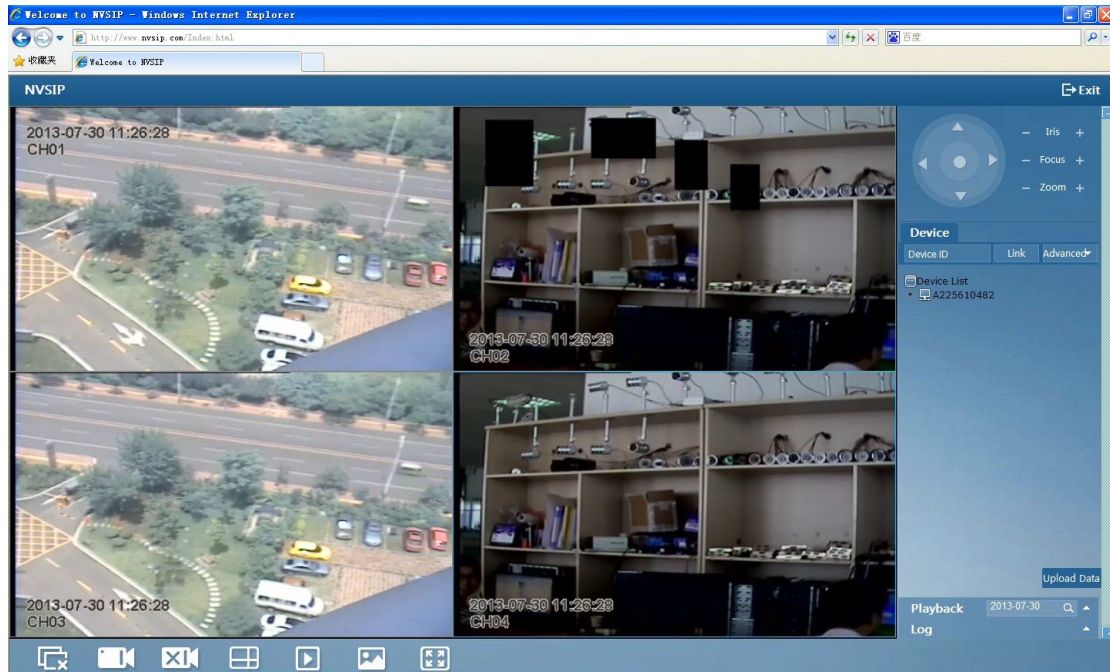




4. Remote Connection with IE

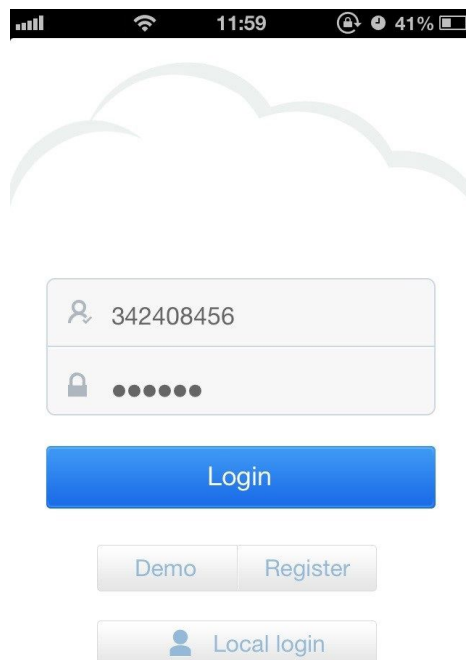
1. Open IE with <http://www.atvcloud.com>, select “Device ID”, Enter the Device ID, and the network username and password, Click the [Login] button, then can login the IE system and connected the DVR Device.


A screenshot of the ATV Cloud web interface for remote connection. The 'Device' tab is selected. The 'Device ID' field is highlighted with a red box and contains the value 'A225610482'. Below it, the 'Settings' button is highlighted with a red box. At the bottom, the 'Account' field contains 'abc' and the 'Password' field contains three dots, both highlighted with a red box. The 'Login' button is visible to the right.

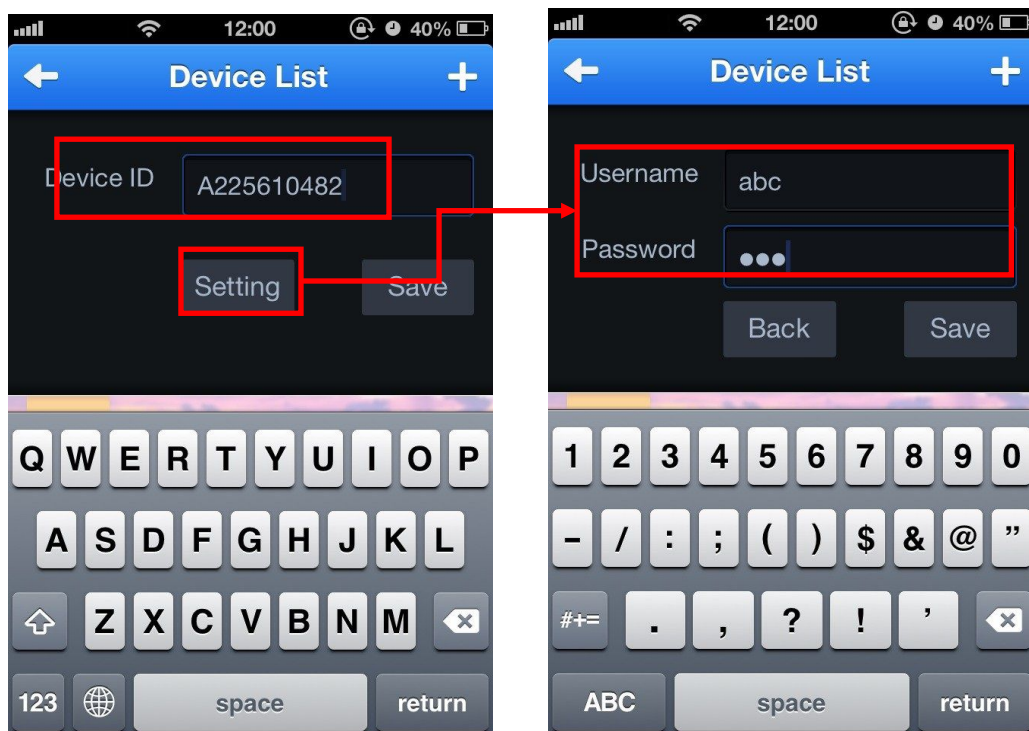


5. Remote Connection with Mobile Phone

1. Download the APP and install it ,after installation,register a user, the login with this user.



2. After Login, Click the button , Add Device, Enter the Device ID and network username and password.



2. Click [Save] button, then Add this Device successful.



3. Click this Device, select one channel, can connect the Device, if you want to see other channels, you can sliding around the picture.

